

ASSEMBLY INSTRUCTION  
MONTAGEANWEISUNG  
INSTRUCCIONES DE MONTAJE  
MONTAGEVEJLEDNING  
MONTERINGSANVISNING

MONTAGE INSTRUCTIE  
INSTRUCTIONS DE MONTAGE  
ISTRUZIONI DI MONTAGGIO  
ΟΔΗΓΙΑ ΣΥΝΑΡΜΟΛΟΓΗΣΗΣ

## BAHAMAS



**VIDEO**  
**You Tube**

**IMPORTANT, SAVE FOR FUTURE CONSULTATION: READ CAREFULLY**

For Hospitality

**WICHTIG, BITTE ZU REFERENZZWECKEN AUFHEBEN:**

**AUFMERKSAM LESEN**

Für die Gastlichkeit

**IMPORTANTE, GUARDAR PARA FUTURA CONSULTA: LEER**

**DETENIDAMENTE**

Para el sector de la hospitalidad

**VIGTIGT, GEM TIL SENERE BRUG: LÆS OMHYGGELIGT**

Til restaurationsbranchen

**VIKTIGT, SPARA FÖR FRAMTIDA BRUK: LÄS NOGA**

För hotell- och restaurangbranschen

**BELANGRIJK, BEWAREN VOOR TOEKOMSTIGE RAADPLEGING:**

**ZORGVULDIG LEZEN**

Voor de horeca

**IMPORTANT, CONSERVER CE DOCUMENT POUR TOUTE**

**CONSULTATION ULTÉRIEURE : LIRE ATTENTIVEMENT**

Pour l'hôtellerie

**IMPORTANTE: CONSERVARE PER FUTURE CONSULTAZIONI.**

**LEGGERE ATTENTAMENTE**

Per uso alberghiero

**ΣΗΜΑΝΤΙΚΟ, ΦΥΛΑΞΤΕ ΓΙΑ ΜΕΛΛΟΝΤΙΚΗ ΑΝΑΦΟΡΑ: ΔΙΑΒΑΣΤΕ ΠΡΟΣΕΚΤΙΚΑ**

Για Φιλοξενία

Manufactured by / Produziert von / Producido Por / Produceret af / Producerad av /  
Gemaakt door / Fabriqué par / Prodotto da / Κατασκευαστής  
Scancom International A/S  
Gl. Banegårdsplads 10, 4220 Korsør Denmark



# LifestyleGarden®

*Sustainable outdoor living*



SU-SC-MA-0383

x 1



SU-OT-LF-0148

x 4



x 1



x 1



HW-PL-07-088

x 8



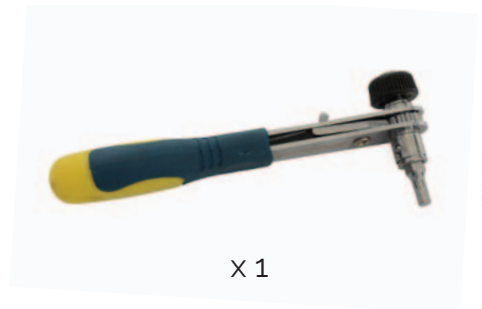
HW-ST-03-152

x 8



HW-ST-18-028

x 1



HW-MM-18-026-246

x 1





01



02



03



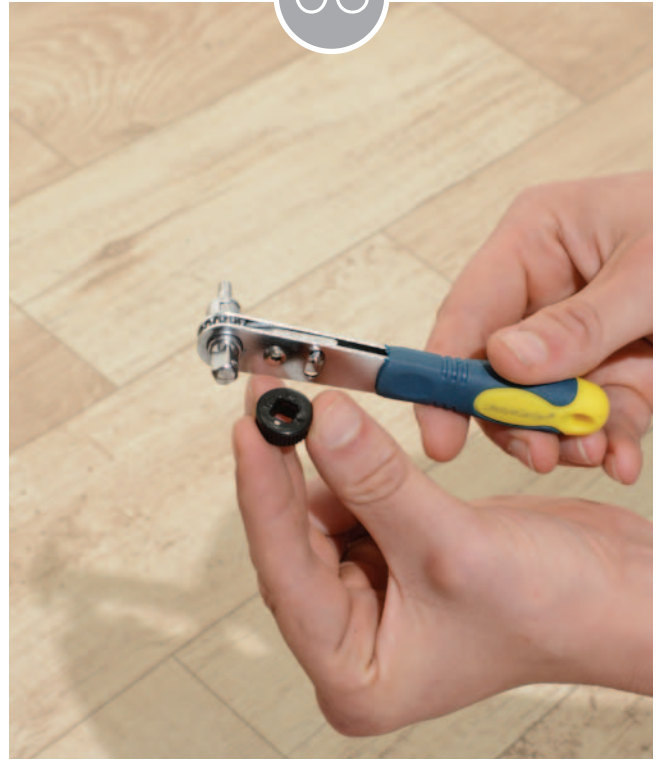
04



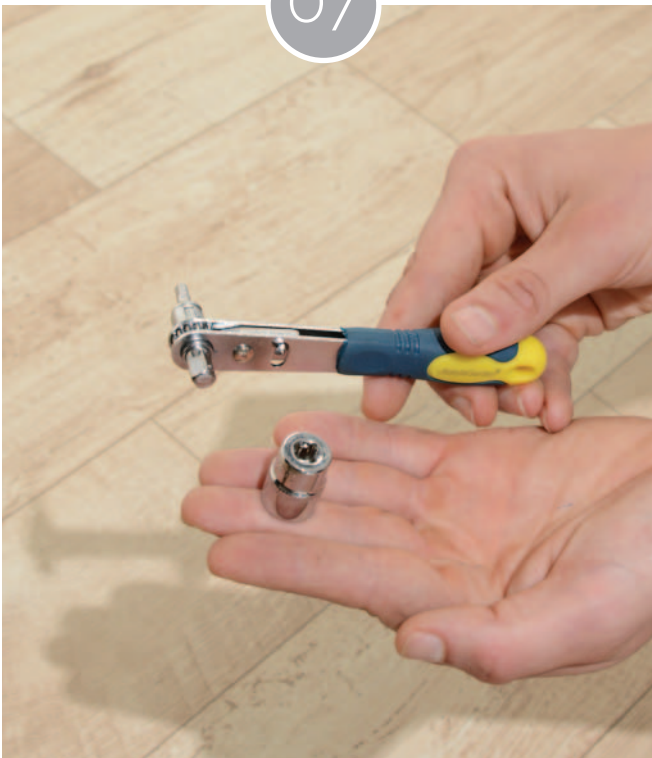
05



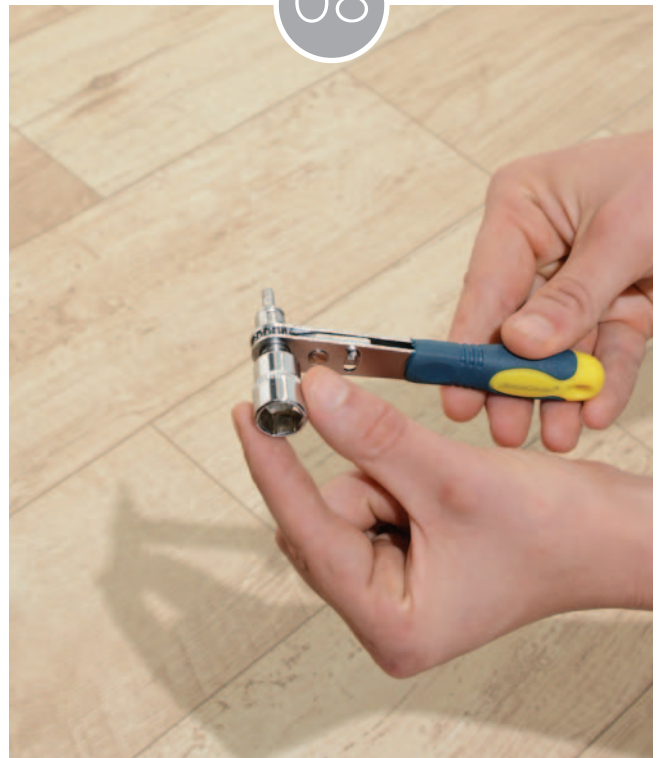
06



07



08





09



10



11



12



# LifestyleGarden®

*Sustainable outdoor living*



<https://www.lifestylegarden.com/warranty/>



[www.lifestylegarden.com](http://www.lifestylegarden.com)



# BAHAMAS COLLECTION



## Furniture covers



## Maintenance

